

The IRRI logo is positioned in the top left corner of the slide. It consists of the letters "IRRI" in a green, serif font. To the right of the text is a horizontal bar divided into two segments: a yellow segment on the left and a green segment on the right. The background of the slide features a close-up photograph of a rice flower in the upper left, and a blue textured background with a pattern of vertical lines and a circular cell-like pattern on the left side.

IRRI

# ICIS Administrator's Tool

*(a sneak peek...)*

**Maria Corina D. Habito**  
**Database Applications Specialist**  
**IRRI-CRIL**

The CIMMYT logo is located in the bottom right corner. It features a stylized white icon of a wheat stalk to the left of the text "CIMMYT" in a white, sans-serif font. A small "MR" trademark symbol is located at the bottom right of the text. The background behind the logo is a green gradient that curves upwards from the bottom left.

 CIMMYT<sup>MR</sup>

## Objectives of the tool

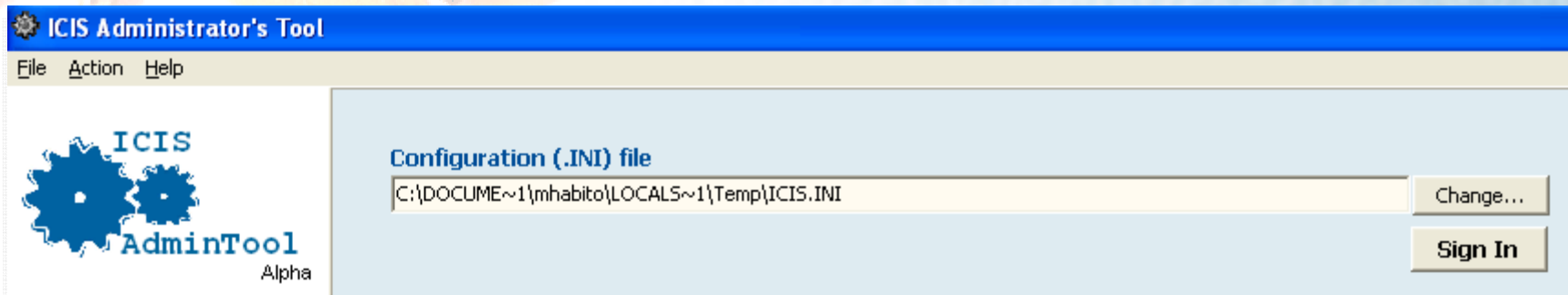
- All-in-one “toolbox” for the ICIS database administrator (to make his/her life easier 😊)

# Background

- Software development began in late 2008
- Tool is still under construction (comments/suggestions welcome)

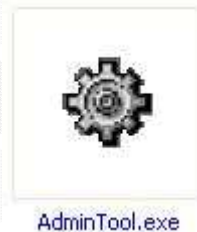


# Overview of features



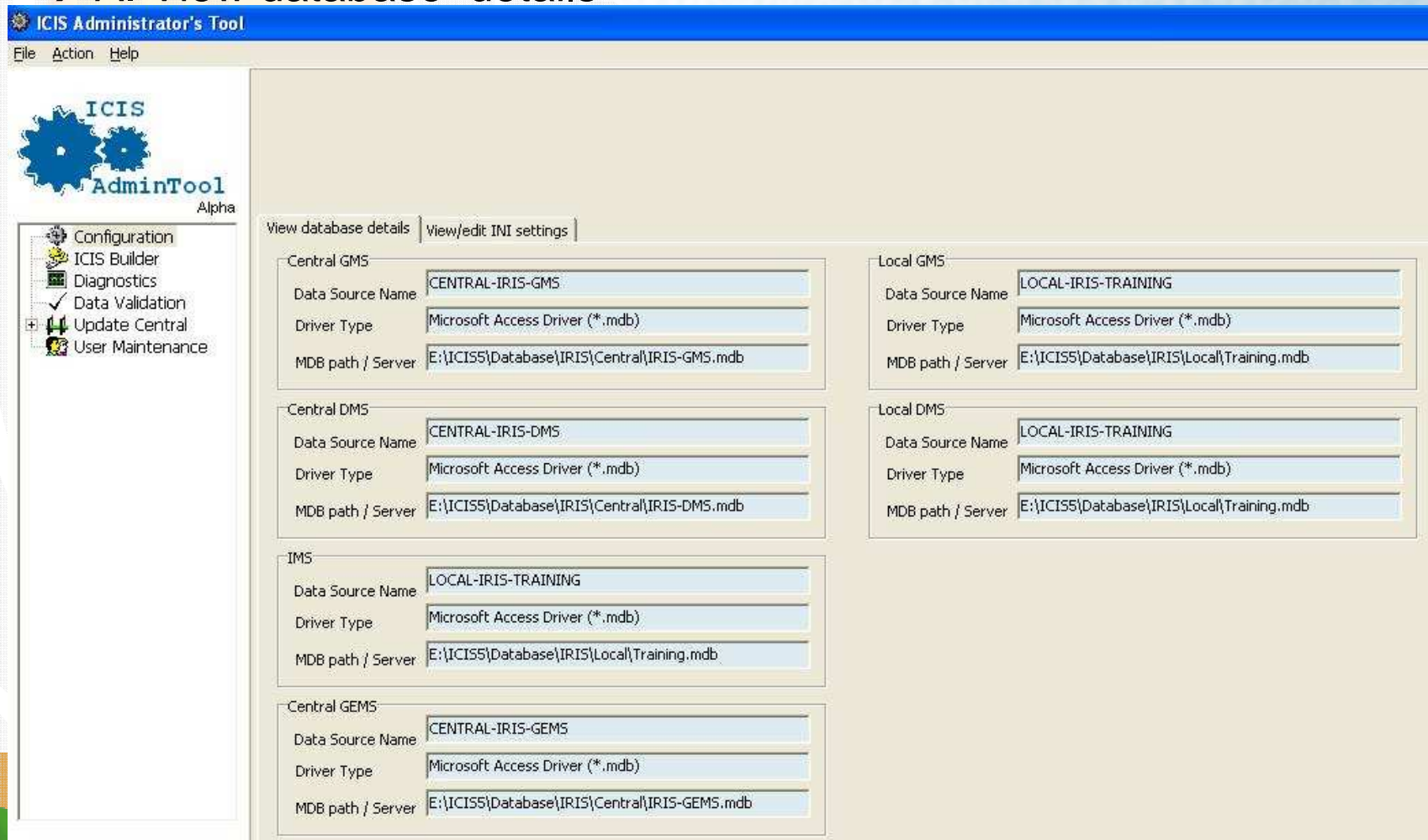
- User authentication: Application should check if an ICIS user is an administrator

- Application icon:



# Overview of features: 6 Main Components

- **1) Configuration**  
 → A. View database details



The screenshot displays the 'ICIS Administrator's Tool' interface. The title bar reads 'ICIS Administrator's Tool' with a menu bar containing 'File', 'Action', and 'Help'. On the left, there is a sidebar with the 'ICIS AdminTool Alpha' logo and a list of menu items: Configuration, ICIS Builder, Diagnostics, Data Validation, Update Central, and User Maintenance. The main window has two tabs: 'View database details' (selected) and 'View/edit INI settings'. The 'View database details' tab shows configuration for several database components:

Component	Data Source Name	Driver Type	MDB path / Server
Central GMS	CENTRAL-IRIS-GMS	Microsoft Access Driver (*.mdb)	E:\ICISS\Database\IRIS\Central\IRIS-GMS.mdb
Local GMS	LOCAL-IRIS-TRAINING	Microsoft Access Driver (*.mdb)	E:\ICISS\Database\IRIS\Local\Training.mdb
Central DMS	CENTRAL-IRIS-DMS	Microsoft Access Driver (*.mdb)	E:\ICISS\Database\IRIS\Central\IRIS-DMS.mdb
Local DMS	LOCAL-IRIS-TRAINING	Microsoft Access Driver (*.mdb)	E:\ICISS\Database\IRIS\Local\Training.mdb
IMS	LOCAL-IRIS-TRAINING	Microsoft Access Driver (*.mdb)	E:\ICISS\Database\IRIS\Local\Training.mdb
Central GEMS	CENTRAL-IRIS-GEMS	Microsoft Access Driver (*.mdb)	E:\ICISS\Database\IRIS\Central\IRIS-GEMS.mdb

# Overview of features: 6 Main Components

- 1) Configuration
  - B. View/edit INI settings

ICIS Administrator's Tool

File Action Help

ICIS AdminTool Alpha

View database details View/edit INI settings

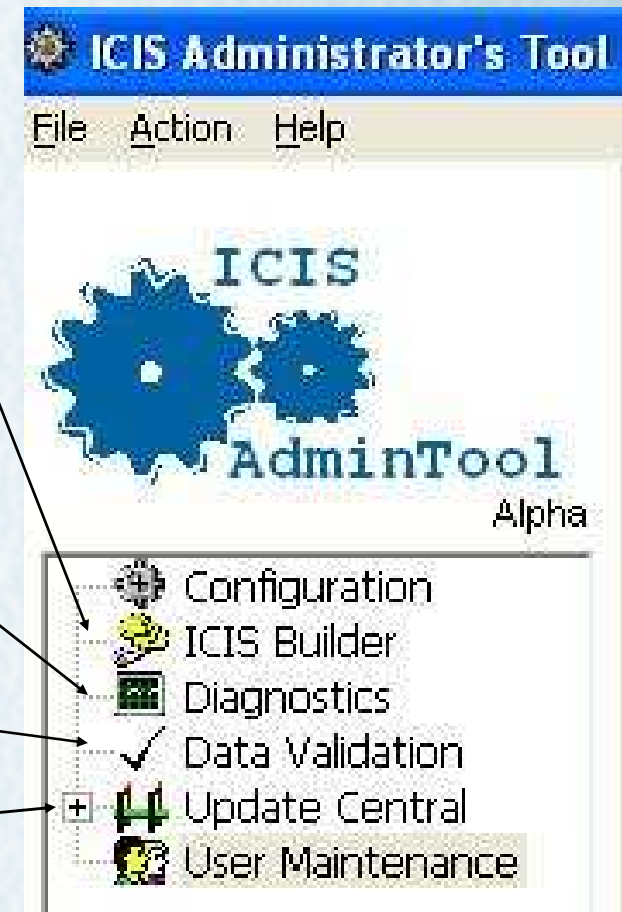
INI Section

IOPT	0
ISRH	0
MGAT	0
NAMP	0
LDST	0
NTCX	0
LIST	0
REFID	0
LocID	0
FCPS	1
BTYPE	1
LastDir	E:\ICISS



# Overview of features: 6 Main Components

- **2) ICIS Builder**
  - define metadata that will serve as the backbone of an ICIS implementation (i.e. new crop)
- **3) Diagnostics**
  - launch the ICIS Installation Diagnostic Tool
- **4) Data Validation**
  - launch the ICIS Data Validation Tool
- **5) Update Central**
  - upload data from local to central DB
  - delete DMS study from central
  - ...



# Overview of features: 6 Main Components

- **6) User Maintenance**

→ A. Assign users to projects. (for handling restricted access to data)

The screenshot displays the 'ICIS Administrator's Tool' interface. The title bar reads 'ICIS Administrator's Tool' and the menu bar includes 'File', 'Action', and 'Help'. On the left, there is a navigation pane with the 'ICIS AdminTool Alpha' logo and a tree view containing: Configuration, ICIS Builder, Diagnostics, Data Validation, Update Central, and User Maintenance (which is selected). The main workspace is divided into several sections. At the top, there is a 'Local database' dropdown menu. Below it are three tabs: 'User-to-Project Matching' (selected), 'Study-to-Project Matching', and 'Project Info'. The 'User-to-Project Matching' section contains a 'Project Name' dropdown menu with 'RICE' selected and a '1' in a small box. Below this is a text field containing 'RICE PROJECT'. Underneath is a section for 'Project members (USERIDs)' with a list containing '-1'. To the right, there is a list titled 'All ICIS users' with the following entries: [-7] RAERTS, [-6] CASPER, [-5] FCLARKE, [-4] VIVEK, [-3] SYATES, [-2] APORUGAL, [-1] WELUSEBIO (highlighted in blue), and [108] RBREED. Below this list are four navigation buttons: '<', '>', '<<', and '>>'.





## Moving forward...

- Further discussion later in the week (Break-Out Session)