



# GMSInput

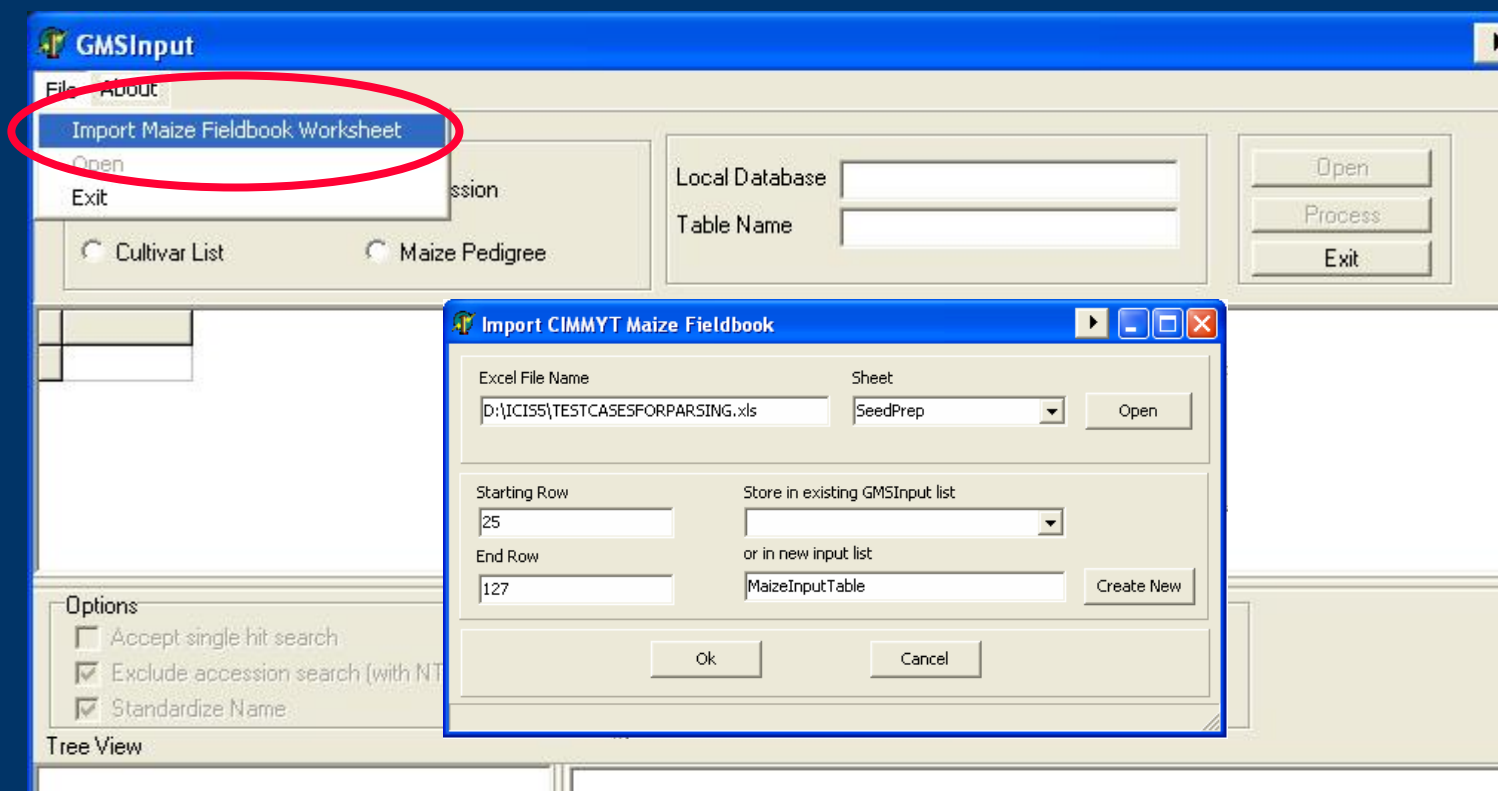
A download tool for CIMMYT Maize Fieldbook  
pedigree data

William H. Eusebio and B.Vivek



# What's new in GMSInput?

Added the facility to import raw maize entries from the CIMMYT Maize Fieldbook worksheet to an input table of GMSInput.





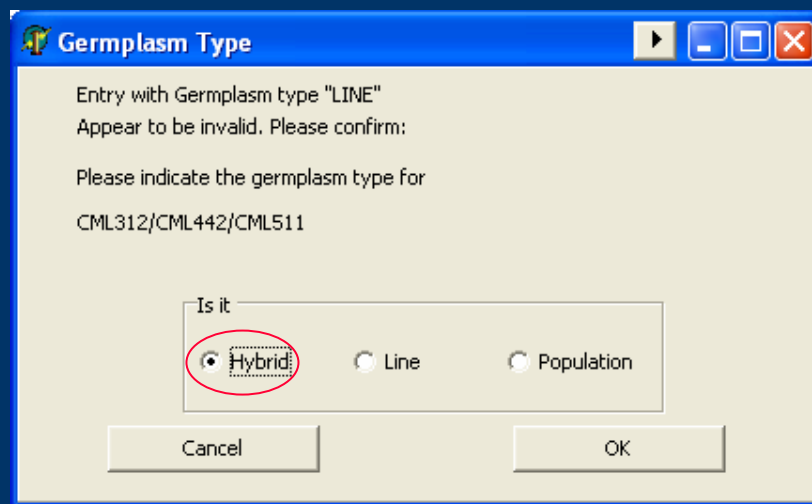
# What's new in GMSInput?

Improved parsing routine for CIMMYT maize pedigree entries

- Which validate cross strings and check the given germplasm type.

H = hybrid, L = line, and P = population

example: **CML312/CML442/CML511 with germplasm type "L"**



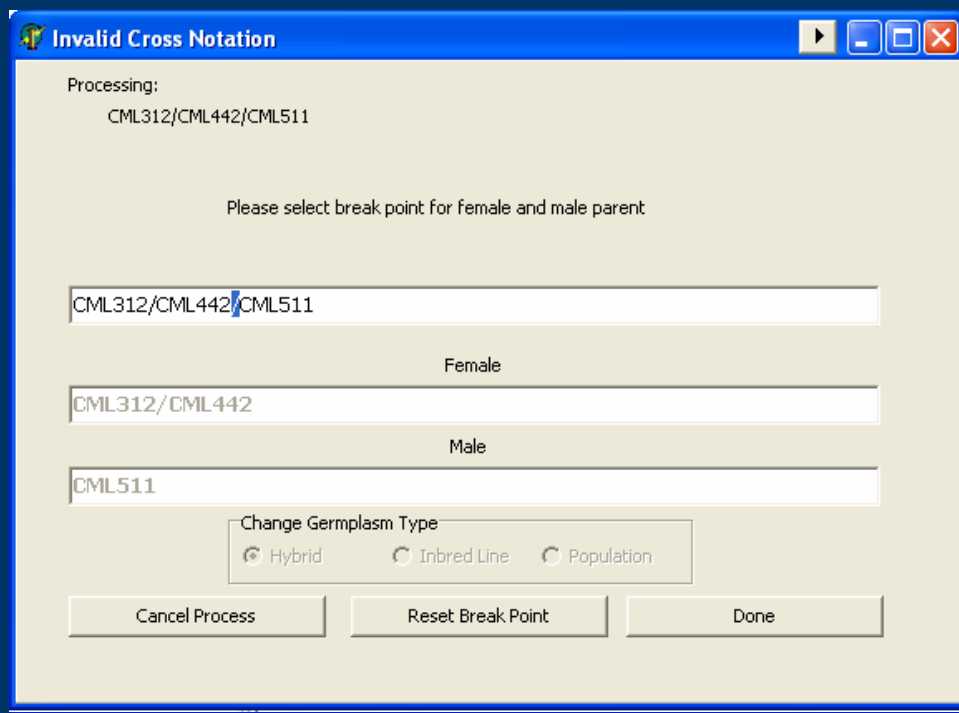
Users are given the chance to specify the correct germplasm type



# What's new in GMSInput?

Improved parsing routine for CIMMYT maize pedigree entries

- Check the consistency of the cross string  
example: **CML312/CML442/CML511**



Users are given the chance to specify the correct breakpoint



# What's new in GMSInput?

Improved parsing routine for CIMMYT maize pedigree entries

- Check the sets of braces present in the pedigree entry and prompt the user in case of irregularities

example: **[CML312/CML395)/(CML444/CML511]**

A screenshot of a Windows-style dialog box titled "Invalid Cross Notation". The dialog has a blue title bar with standard window controls. The main content area is light gray and contains the following elements:

- "Processing:" label followed by the text "[CML312/CML395)/(CML444/CML511]"
- A message: "Please select break point for female and male parent"
- A text input field containing "[CML312/CML395)/(CML444/CML511]" with a blue cursor at the closing parenthesis of the second set of brackets.
- A label "Female" above a text input field containing "CML312/CML395"
- A label "Male" above a text input field containing "CML444/CML511"
- A section titled "Change Germplasm Type" with three radio buttons: "Hybrid" (selected), "Inbred Line", and "Population".
- Three buttons at the bottom: "Cancel Process", "Reset Break Point", and "Done".

Users are given the chance to specify the correct breakpoint



# What's new in GMSInput?

Improved parsing routine for CIMMYT maize pedigree entries

- Check the sets of braces present in the pedigree entry and prompt the user in case of irregularities

example: **[CML312/CML395]/(CML444/CML511]**

The screenshot displays the GMSInput software interface. At the top, a table lists pedigree entries with columns for RECNO, Stock Name, BreedersPedigree, Breed Origin, and various genetic parameters. Row 8 is highlighted, showing the pedigree entry [CML312/CML395]/(CML444/CML511]. Below the table, the 'Options' section contains several checkboxes: 'Accept single hit search' (unchecked), 'Exclude accession search (with NTYPE = 1)' (checked), 'Standardize Name' (unchecked), 'Do not process entries with inconsistent purity string' (unchecked), 'Do not process entries already exist in database' (unchecked), and 'Remember previous selected parent' (checked). The 'Tree View' section shows a hierarchical structure of the pedigree entry, with [CML312/CML395]/(CML444/CML511] selected. The 'Cross Expansion' section provides detailed information for the selected entry, including GID, DESIGNATION, BREEDING METHOD, GERMPLASM LOCATION, GERMPLASM DATE, FEMALE, and MALE.

RECNO	Stock Name	BreedersPedigree	Breed Origin	Conn	Parer	Parer	Type	InbLe	LineC	LineC	LineC	LineC	PopC	PopC	PopC	HybC	HybC	HybC	HybC
4		CML505//CML506//					L												
5		CML312-1/CML395-1					L												
6		CML312/CML395-2	Hybrid				H												
7		CML312/CML395-3	Inbred				L												
8		[CML312/CML395]/(CML444/CML511]																	

Options

Accept single hit search

Exclude accession search (with NTYPE = 1)

Standardize Name

Do not process entries with inconsistent purity string

Do not process entries already exist in database

Remember previous selected parent

Accept

Don't Accept

Tree View

[CML312/CML395]/(CML444/CML511]

Cross Expansion : CML312/CML395//CML444/CML511

GID : -59517

DESIGNATION : [CML312/CML395]/(CML444/CML511]

BREEDING METHOD : Cross between two single heterozygous plants derived from

GERMPLASM LOCATION : Unknown Location

GERMPLASM DATE : 0

FEMALE : CML312/CML395

MALE : CML444/CML511

In result, entries are properly entered in GMS