

The IRRI logo consists of the letters "IRRI" in a green, serif font. To the right of the text is a horizontal bar divided into two segments: a yellow segment on the left and a green segment on the right.

IRRI

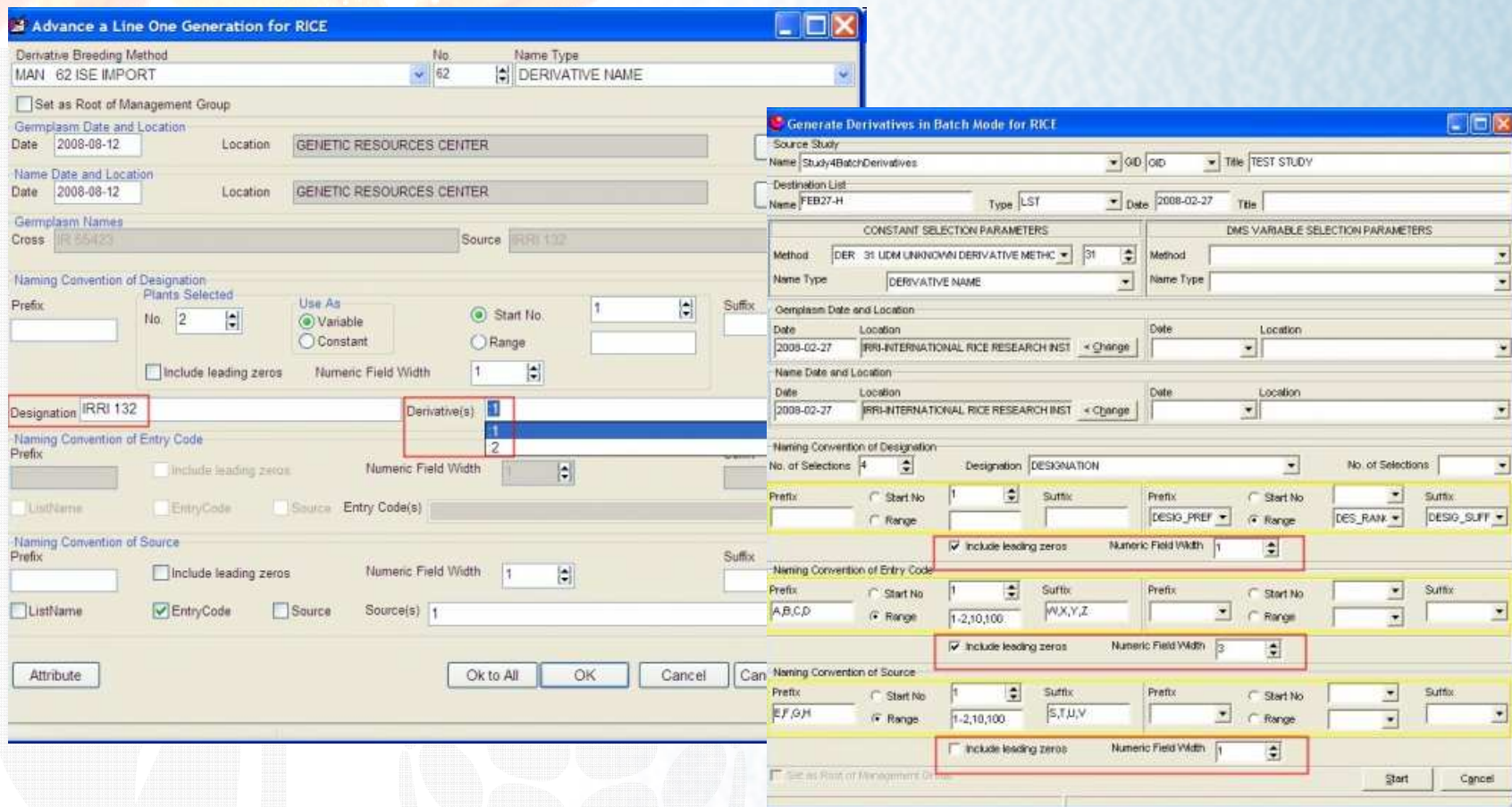
# Customization of the Graphical User Interface

Thomas Metz

Senior Scientist (IRRI)

Crop Research Informatics Laboratory

# GUI overload?



The image displays two overlapping software windows from a genetic resource management system. The left window, titled "Advance a Line One Generation for RICE", contains fields for "Derivative Breeding Method" (MAN 62 ISE IMPORT), "No." (62), and "Name Type" (DERIVATIVE NAME). It includes sections for "Germplasm Date and Location", "Name Date and Location", and "Germplasm Names" (Cross: IR 85423, Source: IRRI 132). The "Naming Convention of Designation" section shows a "Prefix" field and a "No." of 2, with options for "Use As" (Variable or Constant) and "Start No." (1 or Range). A "Designation" field contains "IRRI 132" and a "Derivative(s)" list shows "1" and "2". The "Naming Convention of Entry Code" and "Naming Convention of Source" sections also contain various form fields and checkboxes.

The right window, titled "Generate Derivatives in Batch Mode for RICE", shows a "Source Study" (Name: Study4BatchDerivatives, Title: TEST STUDY) and a "Destination List" (Name: FEB27-H, Type: LST, Date: 2008-02-27, Title: ). It features two main sections: "CONSTANT SELECTION PARAMETERS" and "DMS VARIABLE SELECTION PARAMETERS". The "CONSTANT" section includes "Method" (DER 31 UDM UNKNOWN DERIVATIVE METHC), "No." (31), and "Name Type" (DERIVATIVE NAME). The "DMS VARIABLE" section includes "Germplasm Date and Location" and "Naming Convention of Designation" fields. Below these are multiple rows of "Naming Convention of Entry Code" and "Naming Convention of Source" settings, each with its own set of form fields and checkboxes. The interface is highly detailed and appears to be a complex data entry tool.

## Why customization?

- Different users – preferences
- Different user roles – actions
- Different crops – subset of functionality
- Different breeding programs – workflow
  
- Reduce complexity of GUI (function/option subset)
- Represent user role through GUI
- Represent workflow through GUI

# ICIS customization

**ICIS.ini - Notepad**

```

[GMSSRCH]
#*****
# LOCAL_DB_SEARCH - Sets the default sign of the
#                   GID searched (i.e. YES for negative)
#
# DEF_CASE_FOR_NAME_SEARCH - indicates the default case for Name
#                   Search (e.g. UPPER,LOWER,ANY)
#
# DEF_TAB - sets the active tabpage at start up:
#           (i.e. Names/Attributes, Relatives, Neighborhood)
# ALPHASORT_NAME - sets the default sorting order of the
#                   searchname result(i.e. YES - sorted,
#                   NO - not sorted)
#
# STUDYSQL - sql statement to use for retrieving DMS data
#
#*****
DEF_TAB=Names/Attributes

#*****
#[WORKBOOK] - This section is used by the ICISworkbook.xla applicat
#workbook - the path where the ICIS32.DLL is located
#LastDir - the default directory used in opening and saving files
#HELPPFILE - the path where the custom help file can be placed
#Objective_Alt - the alternative name to the caption "Objective" in the
#TreeView - =True to display the SetGen tree in the Import from S
#           - setting this variable to False improves speed in dis
#UseSGiniIDs - =True to use the ontology IDs in this ini file in aut
#           - the SetGen entries with the workbook columns
#VarTrait - defaults to 251, the trait ID for the property "Cultivar"
#VarScale - defaults to 92, the scale ID for the scale "Variety N
#VarMethod - defaults to 17, the method ID for the method "Not Spe
#GrpNmTrait - defaults to 251, the trait ID for the property "Cultivar"
#GrpNmScale - the scale ID for the scale "Parents"
#GrpNmMethod - defaults to 17, the method ID for the method "Not Spe
#EntryTrait - defaults to 251, the trait ID for the property "Cultivar"
#EntryScale - defaults to 103, the scale ID for the scale "Entry Number"
#EntryMethod - defaults to 17, the method ID for the method "Not Specified"
#SourceTrait - defaults to 251, the trait ID for the property "Cultivar"
#SourceScale - defaults to 104, the scale ID for the scale "Name of Seed Source"

```

**ICIS Program Launcher**

Tools Help

Central GMS	CENTRAL-IRIS-GMS	Local GMS	LOCAL-IRIS-GMS-TRAINING
Central DMS	CENTRAL-IRIS-DMS	Local DMS	LOCAL-IRIS-DMS-TRAINING
IMS	LOCAL-IRIS-DMS-TRAINING	GEMS	

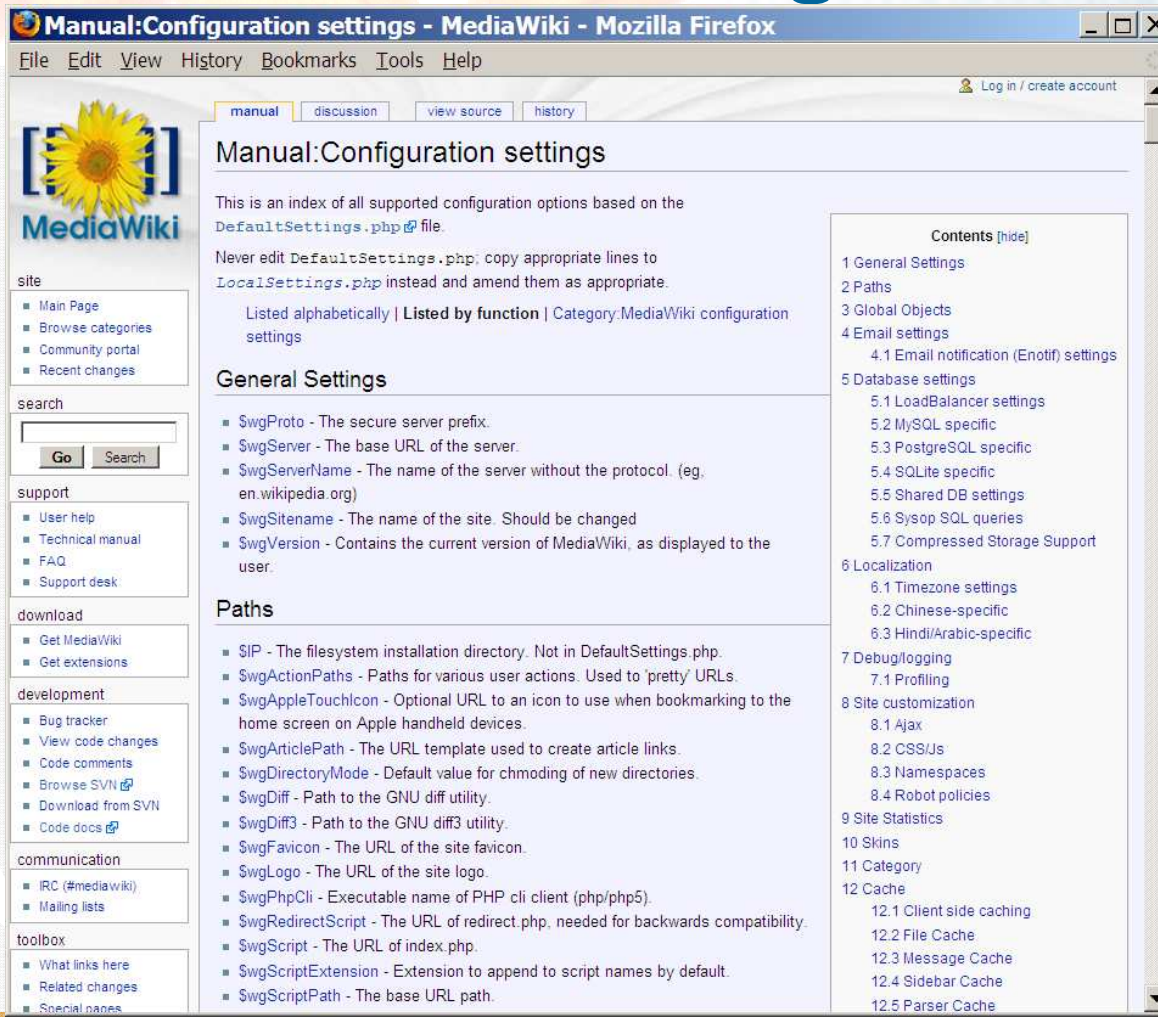
**HELP - Help with ICIS Applications**

- BROWSE - View or Change GMS Records
- SETGEN - Create or Edit Germplasm Lists
- GMSSRCH - Search for Germplasm by Name
- GMSINPUT - Batch Pedigree Download Utility
- IN-TRACK - Inventory Tracker
- WORKBOOK - Loading data to DMS (ICISworkbook)
- RETRVR - DMS Retriever
- DIAGNOSTIC - Installation Diagnostic Tool
- ICISVALIDATE - Data Validation Tool

International Crop Information System CGIAR

Program Path: \\E351MC982V\BBUGROUP\ICIS5\DEVELOP\RE INI File: D:\ICIS5\Exes\training.ini

# Installation settings



**Manual:Configuration settings - MediaWiki - Mozilla Firefox**

File Edit View History Bookmarks Tools Help

Log in / create account

manual discussion view source history

## Manual:Configuration settings

This is an index of all supported configuration options based on the `DefaultSettings.php` file.

Never edit `DefaultSettings.php`; copy appropriate lines to `LocalSettings.php` instead and amend them as appropriate.

Listed alphabetically | **Listed by function** | Category:MediaWiki configuration settings

### General Settings

- SwgProto - The secure server prefix.
- SwgServer - The base URL of the server.
- SwgServerName - The name of the server without the protocol. (eg. en.wikipedia.org)
- SwgSitename - The name of the site. Should be changed
- SwgVersion - Contains the current version of MediaWiki, as displayed to the user.

### Paths

- SIP - The filesystem installation directory. Not in `DefaultSettings.php`.
- SwgActionPaths - Paths for various user actions. Used to 'pretty' URLs.
- SwgAppleTouchIcon - Optional URL to an icon to use when bookmarking to the home screen on Apple handheld devices.
- SwgArticlePath - The URL template used to create article links.
- SwgDirectoryMode - Default value for chmoding of new directories.
- SwgDiff - Path to the GNU diff utility.
- SwgDiff3 - Path to the GNU diff3 utility.
- SwgFavicon - The URL of the site favicon.
- SwgLogo - The URL of the site logo.
- SwgPhpCli - Executable name of PHP cli client (php/php5).
- SwgRedirectScript - The URL of redirect.php, needed for backwards compatibility.
- SwgScript - The URL of index.php.
- SwgScriptExtension - Extension to append to script names by default.
- SwgScriptPath - The base URL path.

#### Contents [hide]

- General Settings
- Paths
- Global Objects
- Email settings
  - 4.1 Email notification (Enotif) settings
- Database settings
  - 5.1 LoadBalancer settings
  - 5.2 MySQL specific
  - 5.3 PostgreSQL specific
  - 5.4 SQLite specific
  - 5.5 Shared DB settings
  - 5.6 Sysop SQL queries
  - 5.7 Compressed Storage Support
- Localization
  - 6.1 Timezone settings
  - 6.2 Chinese-specific
  - 6.3 Hindi/Arabic-specific
- Debug/logging
  - 7.1 Profiling
- Site customization
  - 8.1 Ajax
  - 8.2 CSS/Us
  - 8.3 Namespaces
  - 8.4 Robot policies
- Site Statistics
- Skins
- Category
- Cache
  - 12.1 Client side caching
  - 12.2 File Cache
  - 12.3 Message Cache
  - 12.4 Sidebar Cache
  - 12.5 Parser Cache

# Individual preferences

Preferences - ICISWiki - Mozilla Firefox

File Edit View History Bookmarks Tools Help

Tmetz my talk my preferences my watchlist my contributions log out

special

## Preferences

User profile Skin Math Files Date and time Editing Recent changes Watchlist Search Misc

### User profile

Username: Tmetz  
 User ID: 2  
 Number of edits: 328  
 Real name:   
Real name is optional and if you choose to provide it this will be used for giving you attribution for your work.  
 E-mail:   
E-mail address is optional, but it enables others to contact you through your user or user\_talk page without needing to reveal your identity.  
 Nickname:   
 Raw signatures (without automatic link)  
 Language:

### Change password

Old password:   
 New password:   
 Retype new password:   
 Remember my login on this computer

### E-mail

Your e-mail address was authenticated on 09:03, 8 December 2005.  
 E-mail me when a page I'm watching is changed

navigation

- [Main Page](#)
- [Community portal](#)
- [Recent changes](#)
- [Help](#)

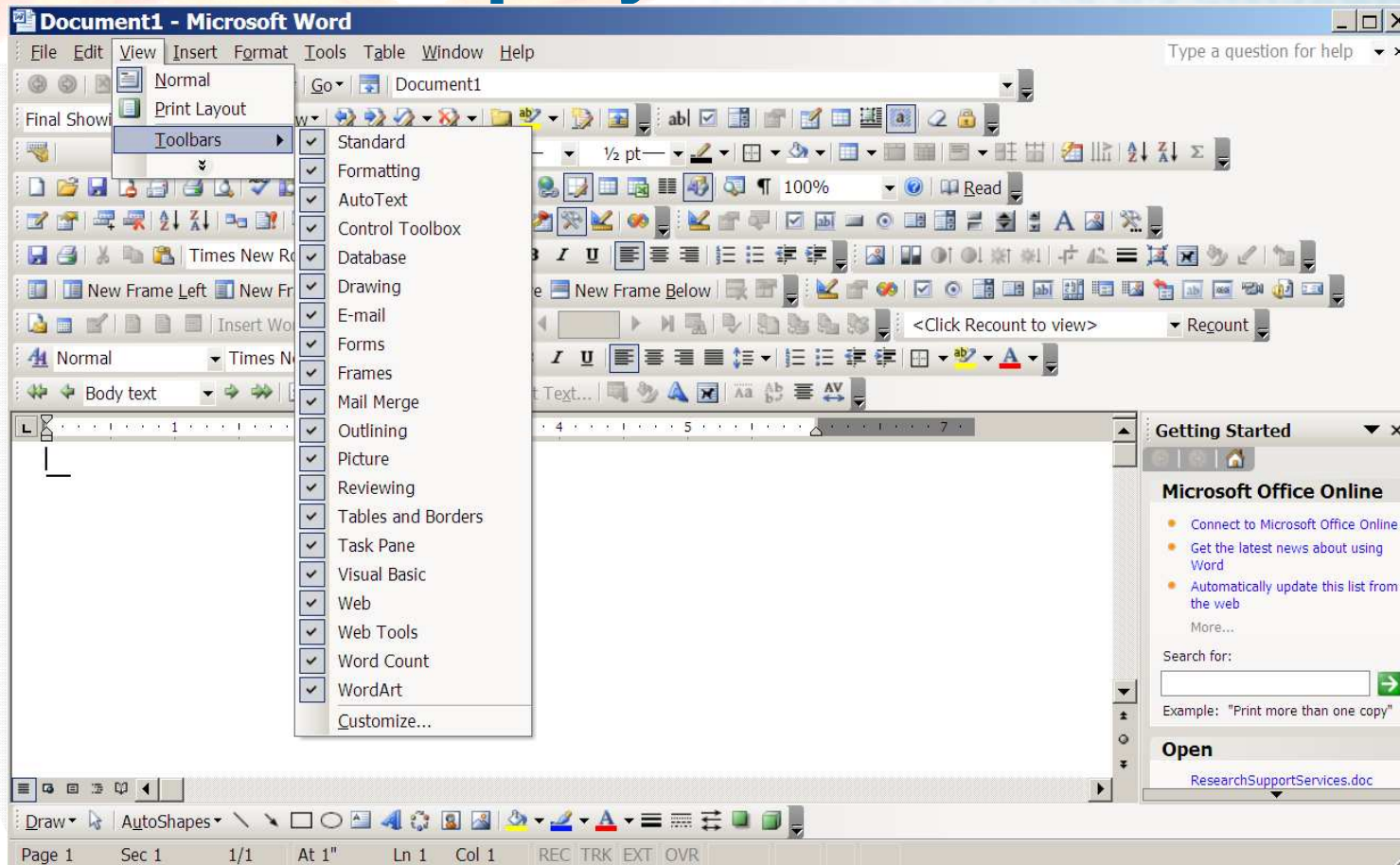
search

Go Search

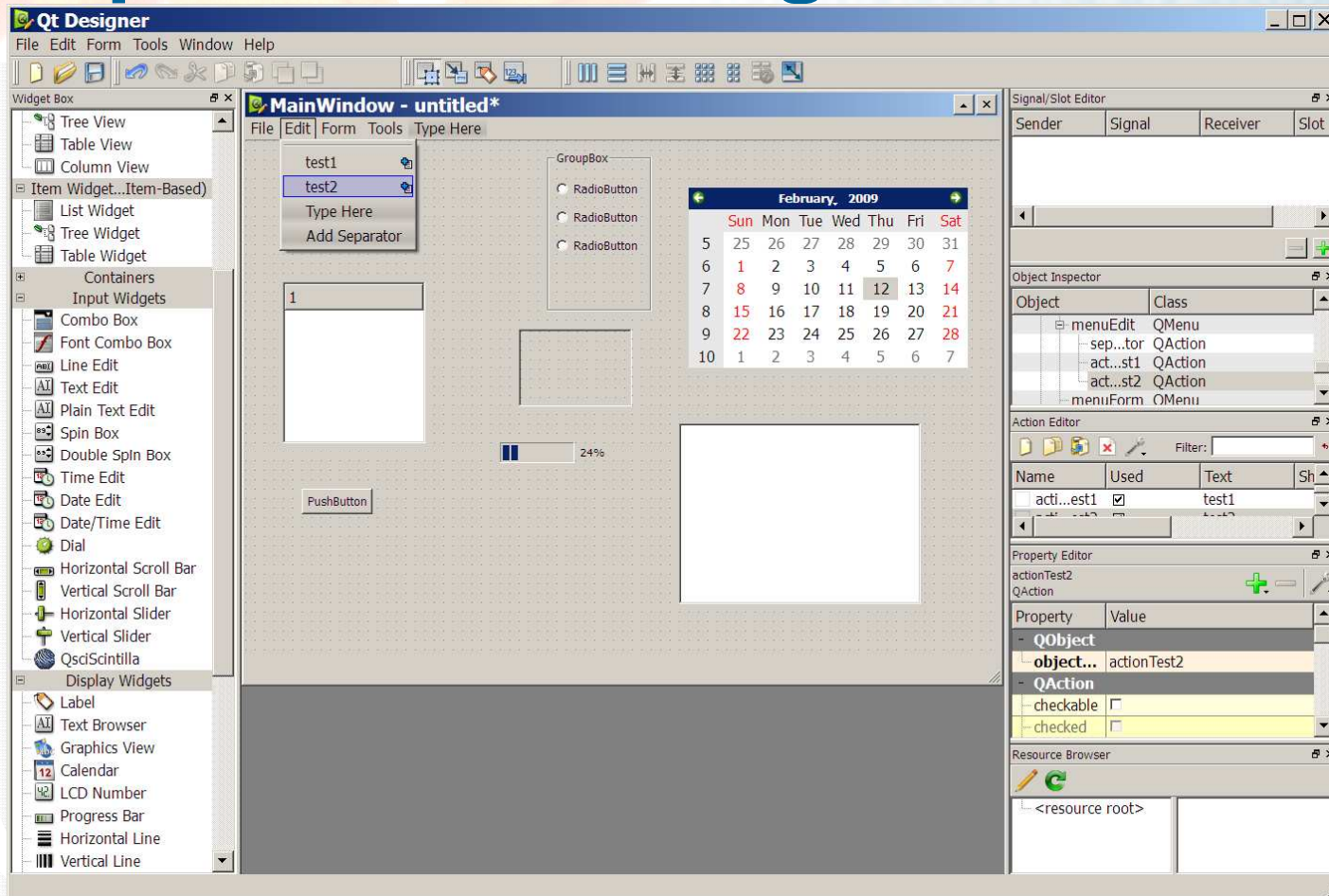
toolbox

- [Upload file](#)
- [Special pages](#)

# Toolbar display and customization

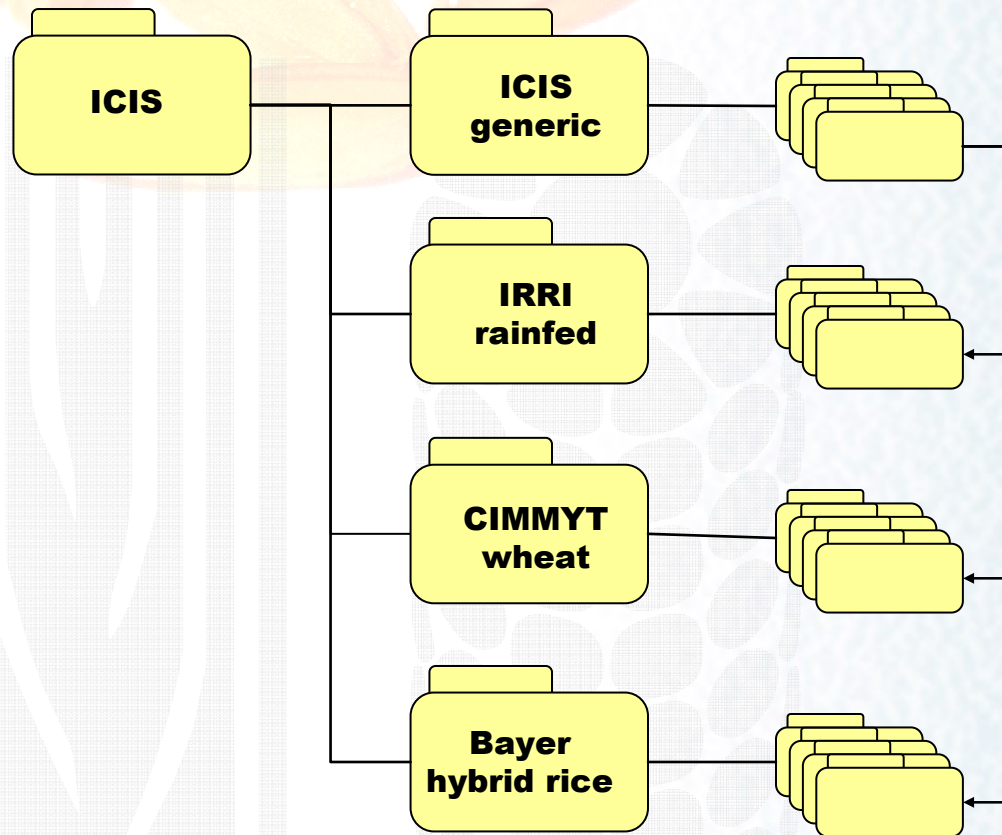


# Separate GUI designs





# Separate source code branches





# Level of customization?

- user
- role
- crop
- breeding program
- installation