

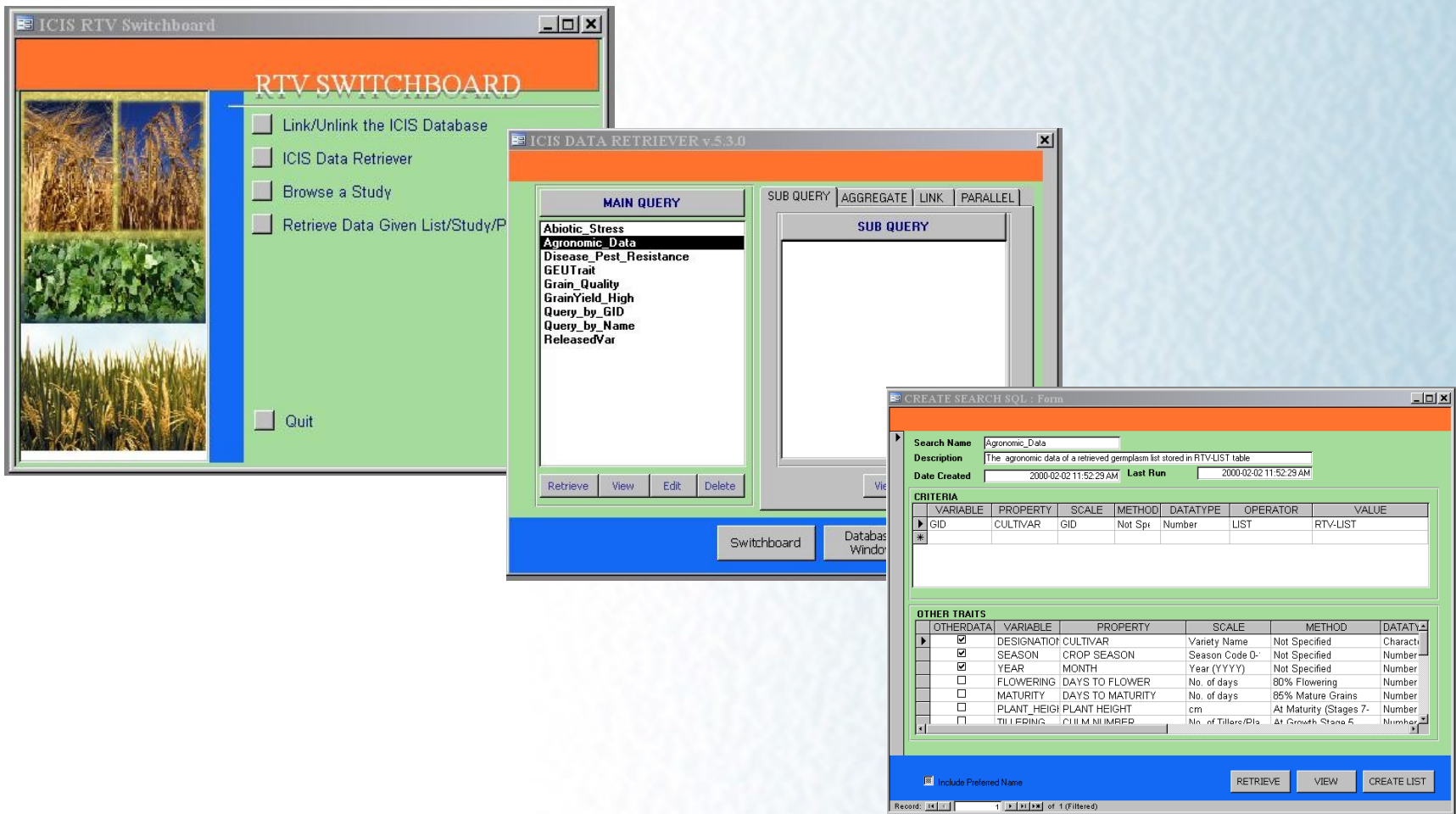
ICIS Retriever 5.3

Arlet M. Portugal

Modifications

- Look-and-feel
- Database is accessed as linked tables
- algorithm for querying
- Additional defined queries

Look-and-Feel



∴ color, composition, and layout

ICIS Database is accessed as linked tables

The image shows two screenshots of utility forms for linking ICIS tables. The left form is titled "Link MSAccess ICIS : Form" and the right form is titled "Link NonMSACCESS : Form". Both forms have a header "UTILITIES FOR LINKING ICIS TABLES".

The "Link MSAccess ICIS : Form" has four buttons arranged in a 2x2 grid:

- Link Central DMS
- Delete Linked Central DMS
- Link Local DMS
- Delete Linked Local DMS

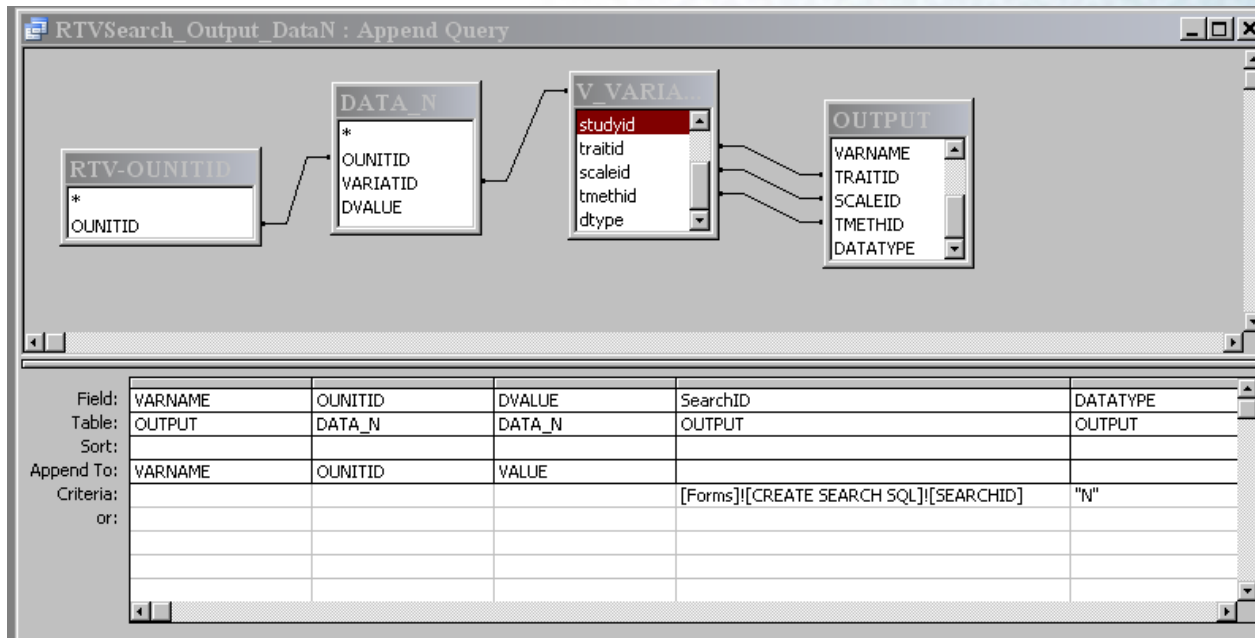
The "Link NonMSACCESS : Form" has a table with four rows, each representing a different table type and location. Each row has a text input field, a "Link" button, and a "Delete Link" button.

Table Type	Driver/Configuration	Link	Delete Link
Central DMS	ODBC;DSN=CENTRAL-IRIS-MYSQL;DESC=MySQL ODBC 3.51 Driver	Link	Delete Link
Local DMS	TRAINING-LOCAL	Link	Delete Link
Central GMS	ODBC;DSN=CENTRAL-IRIS-MYSQL;DESC=MySQL ODBC 3.51 Driver	Link	Delete Link
Local GMS	TRAINING-LOCAL	Link	Delete Link

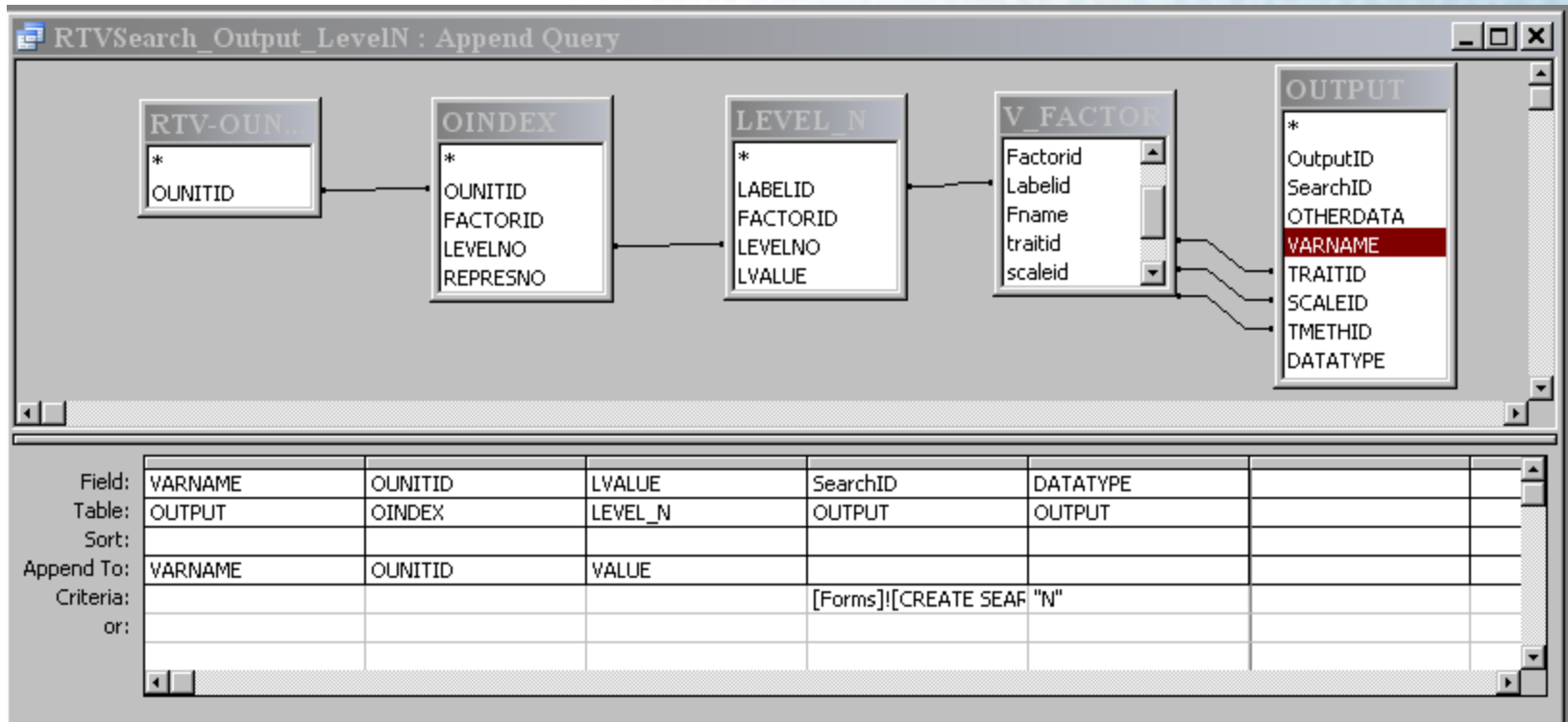
Algorithm for Querying

1. SQL queries are used;
2. RTV-CRITERIA will contain the records that satisfy the criteria
3. RTV-OUNITID table will contain observations that satisfy all criteria
4. RTV-OUTPUT will contain the retrieved records of the observations in the RTV-OUNITID
5. Records are added to RTV-OUTPUT table by Insert queries/
6. One INSERT query for each Data or Level table of central and local DMS databases
7. A table named after the search name is created
8. Using Update queries, the retrieved data in RTV-OUTPUT is transferred to the table

Sample Query to append records from DATA table



Sample Query to append records from LEVEL table



Additional Defined Queries

- Query to retrieve data from study where any of the entries in the selected SetGen Lists is tested

SEARCH FOR STUDY & PROPERTY: ANY GID IS TESTED : Form

LIST				SELECTED LIST		
			U03WSF4	U03WSHB		Upland hybridization block
			U03WSF5A			
			U03WSF5B			
			U03WSF7			
			U03WSHB			
			U04NSF1			

Select Show List Delete Clear

PROPERTY				SELECTED PROPERTY		
WEATHER	WEATHER CONDIT	INGER Code (1-3)	Not Specified	ALK	ALKALI TOLERANCE	SES Score Alk
YLD	GRAIN YIELD	Kg/ha	Paddy Rice	ALK1	ALKALI TOLERANCE	SES Score Alk
YLD	GRAIN YIELD	g/plot	Paddy Rice	AMY	AMYLOSE CONTENT OF GRAIN	Percent
YLD_C	GRAIN YIELD	Kg/plot	Paddy Rice	AMYLOSE	AMYLOSE CONTENT OF GRAIN	Percent
Y5B	STEMBORER DAMA	SES Score Deadhead	Yellow Stemborer	AROMA	AROMA	Description
ZN	ZINC DEFICIENCY	SES Score Growth	Greenhouse Evaluat	BLAST	LEAF BLAST	SES Score Bla
ZN1	ZINC DEFICIENCY	SES Score Growth	Field Trial			

Select All Delete Clear

STUDY		SELECTED STUDY	
HB19860	1986 Hybridization Block, Dry Season	HB19860	1986 Hybridization Block, Dry Season
HB19861	1986 Hybridization Block, Wet Season	HB19861	1986 Hybridization Block, Wet Season
HB19870	1987 Hybridization Block, Dry Season	HB19870	1987 Hybridization Block, Dry Season
HB19871	1987 Hybridization Block, Wet Season	HB19871	1987 Hybridization Block, Wet Season
HB19880	1988 Hybridization Block, Dry Season	HB19880	1988 Hybridization Block, Dry Season
HB19881	1988 Hybridization Block, Wet Season	HB19881	1988 Hybridization Block, Wet Season
HB19890	1990 Hybridization Block, Dry Season		

Select All Delete Clear

RUN Refresh

Additional Defined Queries

- Query to retrieve data from study where all of the entries in the selected SetGen Lists are tested

The screenshot shows a software window titled "SEARCH FOR STUDY & PROPERTY: ALL GIDS ARE TESTED - Form". The interface is divided into three main sections: LIST, PROPERTY, and STUDY. Each section has a "SELECTED" counterpart on the right.

LIST Section:

LIST_PATH	LIST_NAME
	CHECKS
	U02WSAYT
	U02WSF1
	U02WSF2
	U02WSF3

Buttons: Select, Show List, Delete, Clear

PROPERTY Section:

Buttons: Select, All, Delete, Clear

STUDY Section:

Buttons: Select, All, Delete, Clear

Bottom Buttons: RUN, Refresh

Future Enhancements

- The same UI as the Workbook
- Automatic linking of the databases using the ICIS.INI
- Testing of the queries in other database platform