

# ICIS Developers' Workshop 2007

## SetGen 5.4.1

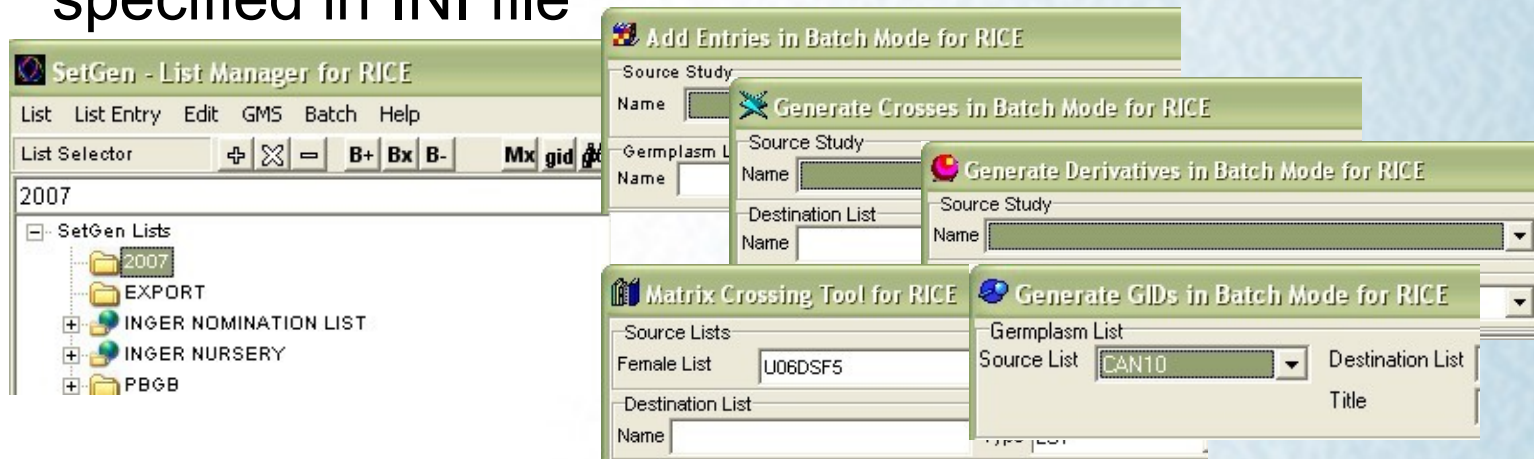
**Clarissa Pimentel**

# SetGen 5.4.1

- Recent Changes:
  - Lists / Forms Improvement
  - Batch Forms
  - Fill Withs...
  - MTA
- New INI keys
- Future Plans

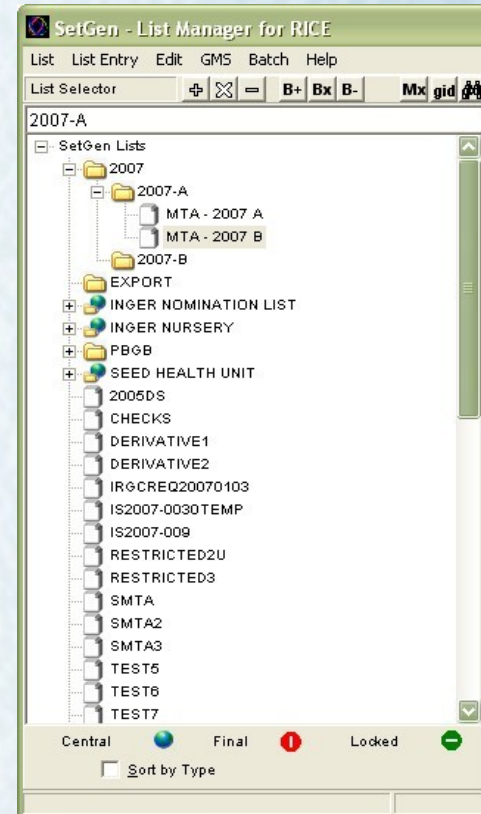
# Lists / Forms Improvement

- Focus on TextBoxes/Buttons in forms and tab-ordering are improved
- Added the use of hourglass cursor during "busy" time for several functions
- Improved caption of forms by including CropName specified in INI file



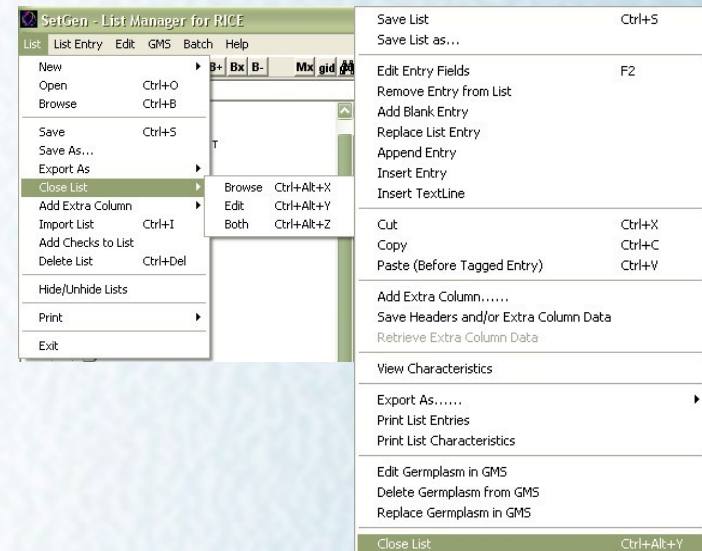
# Lists / Forms Improvement ...

- Sorting of tree list - folders first then lists in alphabetical order
- LIST or FOLDER name always unique
- Default width of List Selector can now be set in INI file (INI key is LIST\_PANEL\_WIDTH=n)



# Lists / Forms Improvement ...

- Added extra possibilities (mouse wheel events and page up/down) for navigating in Lists
- Opening position (location) of several forms is centered
- Added shortcut text/keys



# Lists / Forms Improvement ...

- Shows the newly added entry in list
- Displays full description of name types as hints in Alternative Names/Attributes

The screenshot shows a software window titled "Germplasm Characteristics for RICE" with a tab for "Germplasm Characteristics (GID: 2064752)". The interface is divided into several sections:

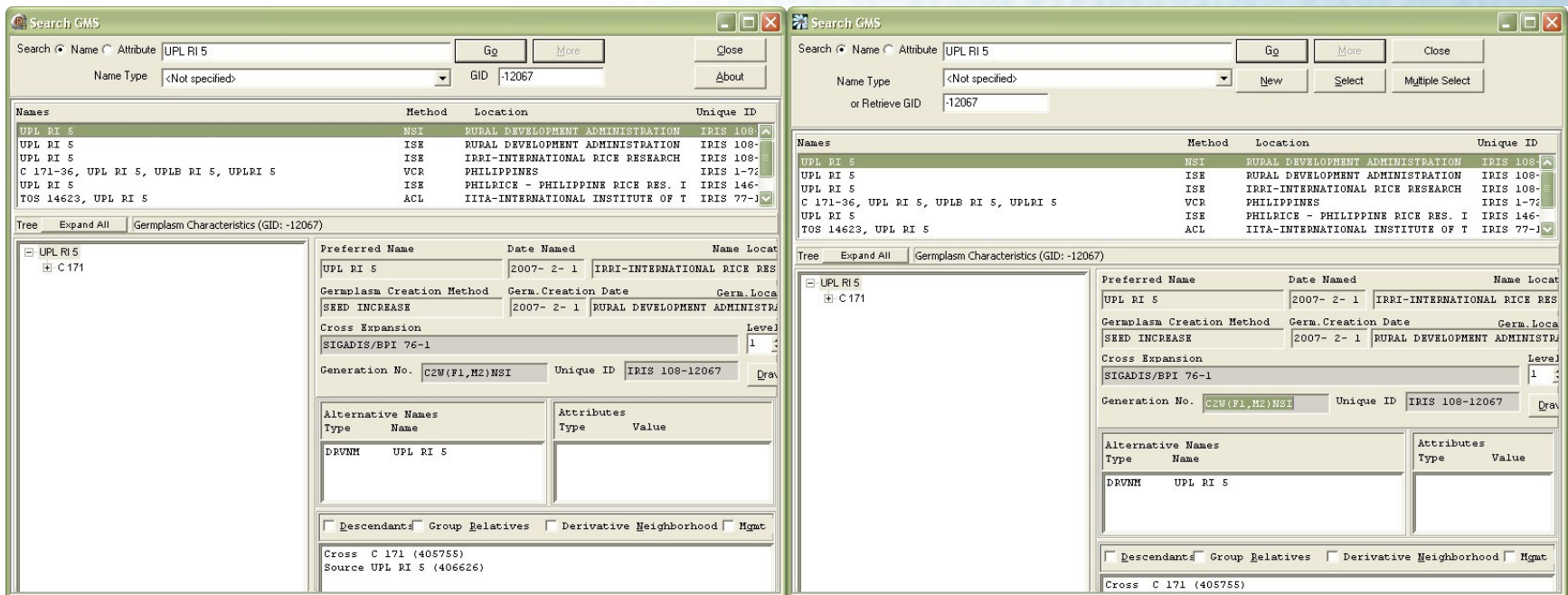
- Tree:** A sidebar on the left shows a tree view with "KAWILAN" selected.
- Basic Information:**
  - Preferred Name: KAWILAN, Date Named: 2006- 5-17, Name Location: COTABATO (NORTH)
  - Germplasm Creation Method: IMPORT, Germ. Creation Date: 2006- 5-17, Germ. Location: COTABATO (NORTH)
  - Cross Expansion: KAWILAN, Levels: 1
  - Generation No.: UKN (F?) ISE, Unique ID: 146-96
- Descendants/Group Relatives:**
  - Cross KAWILAN (2064749)
  - Source (0)
- Alternative Names and Attributes:**

Type	Name	Type	Value
CVNAM	KAWILAN	IPSTAT	RESTRICTED - NOT FOR DIS
		HTA	IS2006-024

MTA NUMBER
- List/s where this Germplasm is present:**
  - IS2006-024(2155)
  - RESTRICTED2U(-32)
  - RESTRICTED3(-70)
  - SHTA\_TEST(-69)
- Generation History:** (Empty field)
- Buttons:** Print, Close, Close All

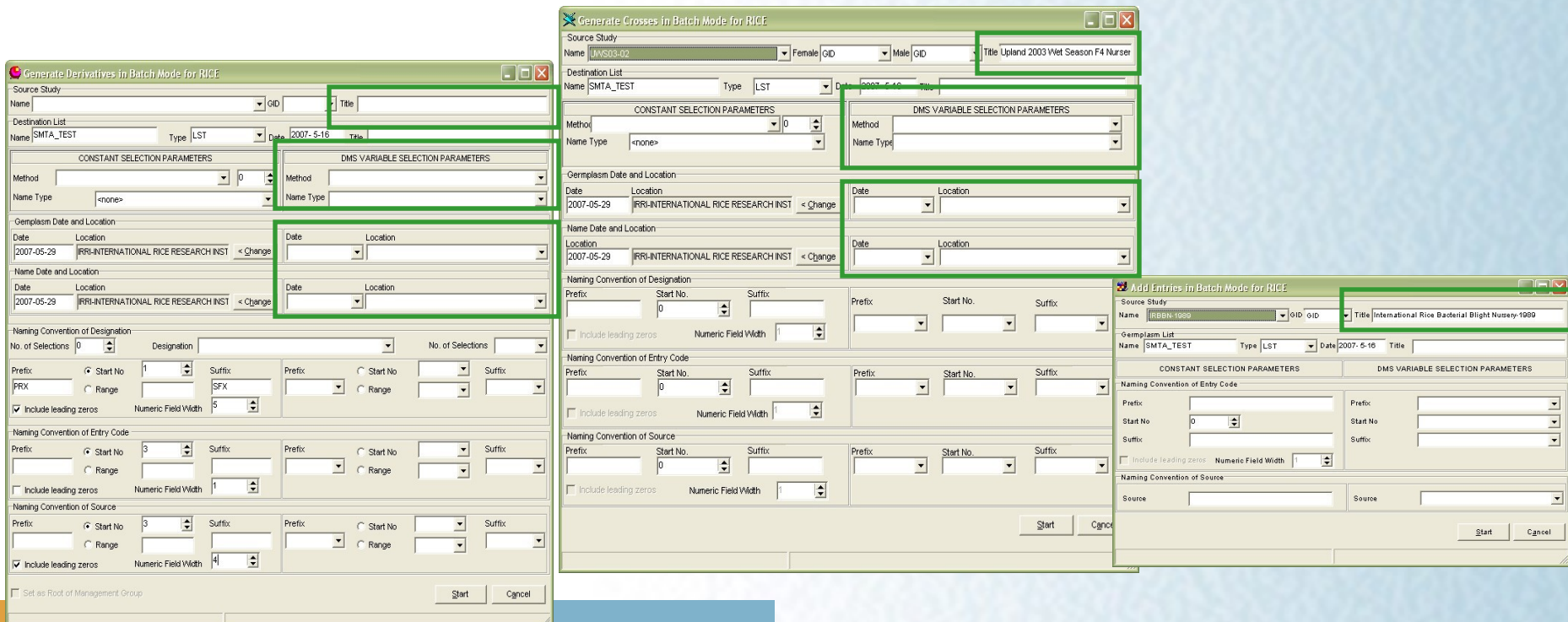
# Lists / Forms Improvement ...

- Uniformity of forms for both stand-alone and SetGen GMS Search tool



# Batch Forms

- Added Title information when STUDY-dropdown box in B-, Bx, B+ forms changes
- Added validation checks for breeding method, name type, and location of Bx and B- tools in "DMS Variable Selection Parameters"





# Batch Forms ...

- Changed layout of Matrix Crossing tool

Before

After

# Batch Forms ...

- Added leading zeros in designation names. In INI file, the key-value is STANDARDIZE=NO

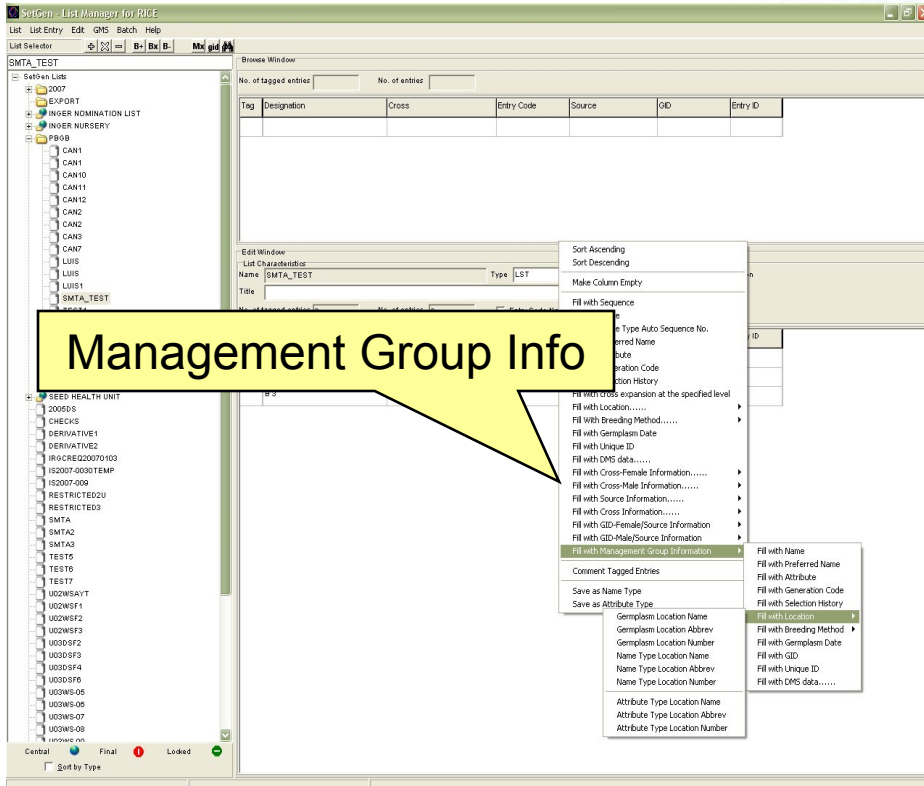
The screenshot displays three overlapping windows from the 'Matrix Crossing Tool for RICE' software:

- Matrix Crossing Tool for RICE:** Shows source lists (Female List: U06DSFS, Male List: SMTA\_TEST) and options for saving combinations to an output list. It includes sections for 'Specify Type' (Female/Male combinations), 'Common Characteristics' (Breeding Method, Name Type: CROSS NAME), and 'Nomenclature' (Naming Convention of Designation and Entry Code).
- Generate Crosses in Batch Mode for RICE:** A dialog for generating crosses, showing source study details and constant selection parameters.
- Advance a Line One Generation:** A dialog for generating derivatives. It shows:
  - Derivative Breeding Method: DER 205 DSP SINGLE PLANT SELECTION
  - No.: 205
  - Name Type: DERIVATIVE NAME
  - Germplasm Date and Location: 2007-05-29, IRR-INTERNATIONAL RICE RESEARCH INSTITUTE, LC
  - Naming Convention: Plants Selected No. 2, Use As Variable, Start No. 1, Suffix.
  - Include leading zeros** (checked) and **Numeric Field Width 5** (circled in red).
  - Germplasm Names: Cross HP 8698, Source HP 8698-1
  - Designation: HP 8698-1, Derivative(s): -00001
  - Entry Code: ListName, EntryCode, Source, Entry Code 1744403-001
  - Source: ListName, EntryCode, Source, Seed Source RESTRICTED2U-0001

## Fill Withs

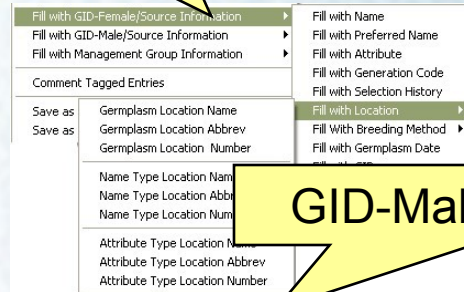
- Extension of menu-options in "Fill Column with " (for EntryCode, Source, Extra columns) in the ff:
  - Fill with GID-Female/Source Information
  - Fill with GID-Male/Source Information
  - Fill with Cross Information
  - Fill with Management Group Information

# Fill Withs ...

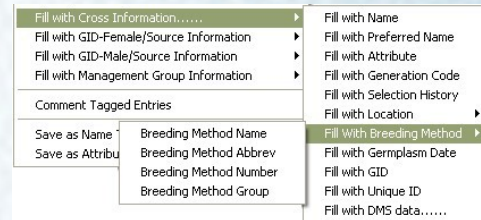
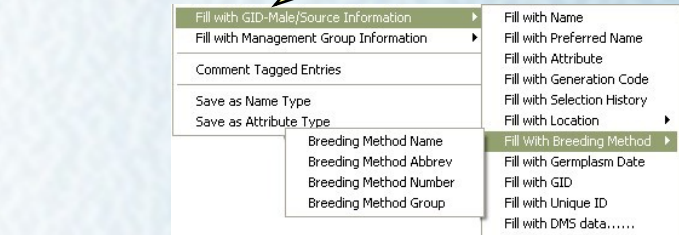


Management Group Info

GID-Female/Source Info



GID-Male/Source Info



Cross Info

# MTA

- Added a feature for showing MTA files from the web or from a local path
- Provide the ff. INI keys:
  - MTA\_PATH={either URL or local path}
  - MTA\_FILE\_EXT={document file extension e.g. .pdf or .doc}

Fill With Attribute → Select MTA Number → View MTA



# INI keys

- LIST\_PANEL\_WIDTH=n
- MTA\_PATH=C:\smta\_files\ OR <http://www.iris.irri.org/smta/files/>
- MTA\_FILE\_EXT=.pdf or .doc
- TEXTLINE=YES

Import Germplasm List

Excel File Name

Destination List

Name  Type  Date

Title

GMS Variable Parameters

import GIDs to create a new list

GID  Entry Code

Textline  Source

# INI keys ...

- SEPARATOR= /
- AUTOFILLVCOL=YES
- STANDARDIZE=YES
- DEL\_GERM\_WITH  
\_DESCENDANTS=NO

**Delete GMS Germplasm Characteristics**

Germplasm Name: IR 69502-6

or Retrieve GID: 204231

Preferred Name: IR 69502-6

Method: SINGLE PLANT SELECTION SF

Group Germplasm: IR 69502

Source Germplasm: IR 69502

Germplasm Location: IRRI-INTERNATIONAL RICE RESEARCH INSTITUTE, LOS BANOS

Germplasm Date: -- Name Type: --

Name Location: IRRI-INTERNATIONAL RICE RESEARCH INSTITUTE, LOS BANOS

Name Date: --

Reason for deleting:

Delete Location:

Check list/s where GID of this Germplasm should be set to zero(0)

SMTA(-42)

List/s where this Germplasm is present

Dependencies

Prog. No	Name
1	P 2 S
2	IR 69502-6-SBN 3
2	IR 69502-6-SBN
2	IR 69502-6-SBN
2	IR 69502-6-SR
2	IR 69502-6-SRN 3

Display all dependencies



# Future Plans

- Calculate Coefficient of Parentage
- Accept Designation/Name entry in lower case
- Skins
- Option to display DMS data in lists
- Option to define a “standard” SetGen list with default “extra columns”
- list of feature requests/bug fixes from users

# ICIS Developers' Workshop 2007

## SetGen 5.4.1

**Clarissa I. Pimentel**