

March 3th, 2008



Activities Report of CIP on 2007 in relation with ICIS

Edwin Rojas
Research Informatics Unit (RIU)
International Potato Center (CIP)

ICIS Workshop 2008
IRRI, Philippines

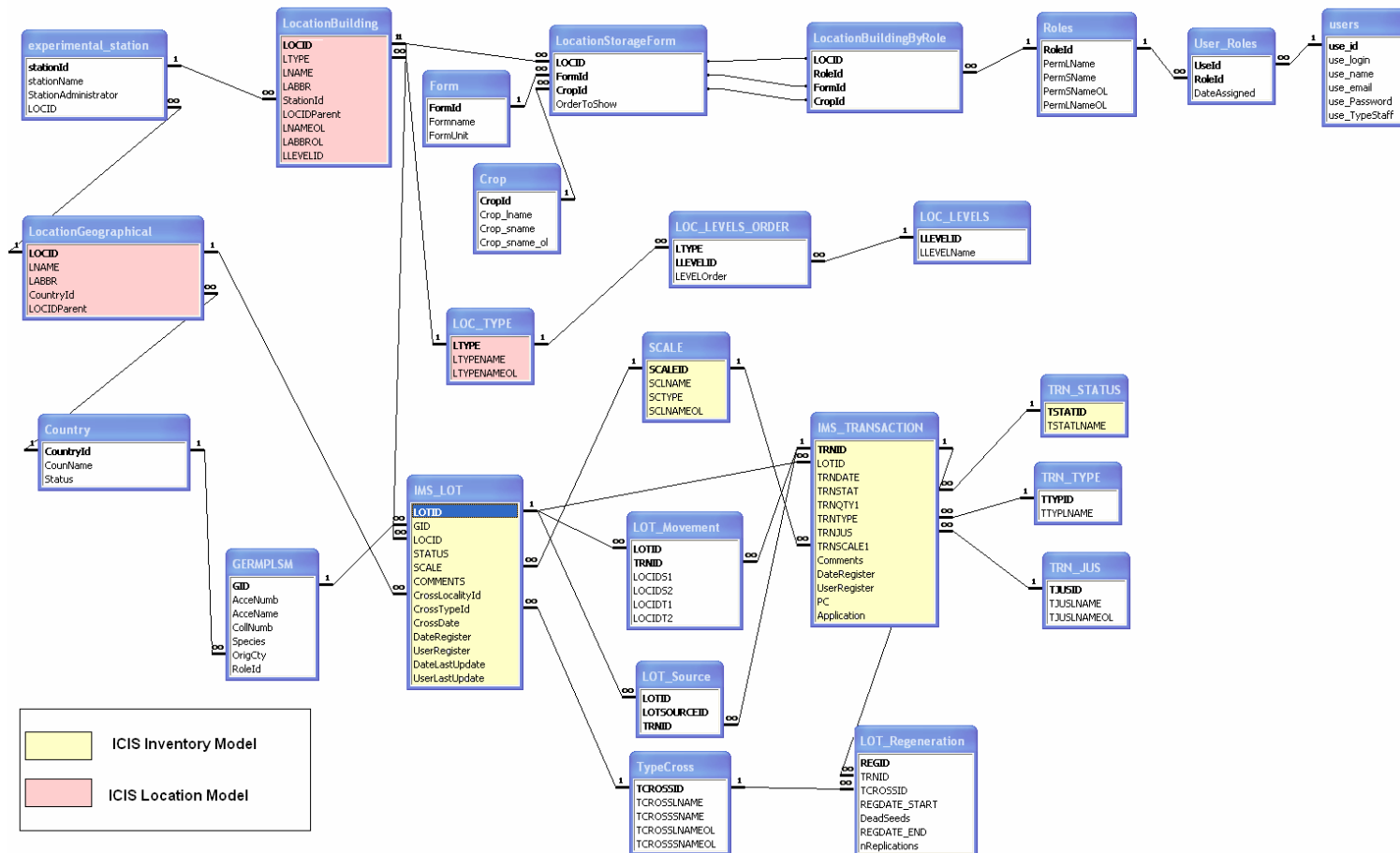
Overview

- **ICIS Models reused in CIP Inventory System (CIPSER)**
 - ICIS Location Model
 - ICIS Inventory Model
- **About CIPSER System**
 - Is a mobile solution for seed inventory
 - For curator and breeders
 - Integrated with barcodes, thermal printing, wireless and PDAs
- **Available Documentation**
 - Report about ICIS models reused in CIP
 - For CIPSER System
 - For CIP Mobile Solutions (barcode + thermal printing + mobile devices + wireless)

ICIS Models reused in CIP Inventory System (CIPSER)

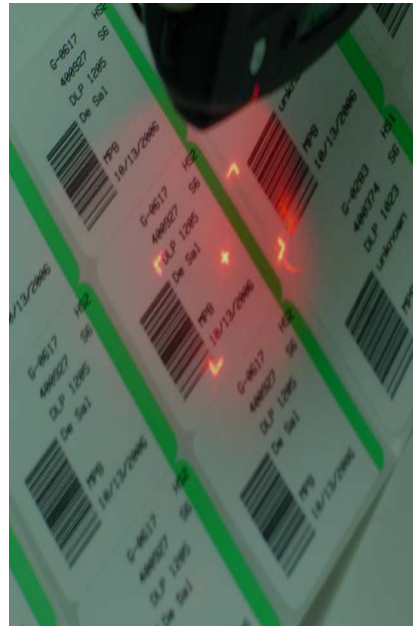
ICIS Location Model and ICIS Inventory Model in CIP Inventory Model

http://cropwiki.irri.org/icis/index.php/TDM_Location_Management_System & http://cropwiki.irri.org/icis/index.php/TDM_Inventory_Management_System



About CIPSER System

<http://research.cip.cgiar.org/confluence/display/GIMS/Genebank+Inventory+System+for+Seed+-+CIPSER>



- Manage seed stocks for curators and breeders
- Manage seed locations for curators and breeders
- Support different CIP crops: potato, sweetpotato and ARTCs
- Support multiple cold chambers
- Help to simplify the seed management using barcodes, wireless, mobile devices (PDAs) and thermal printers integrated

Available Documentation

- **Report about ICIS models reused in CIP**

http://cropwiki.irri.org/icis/index.php/CIPSER_System

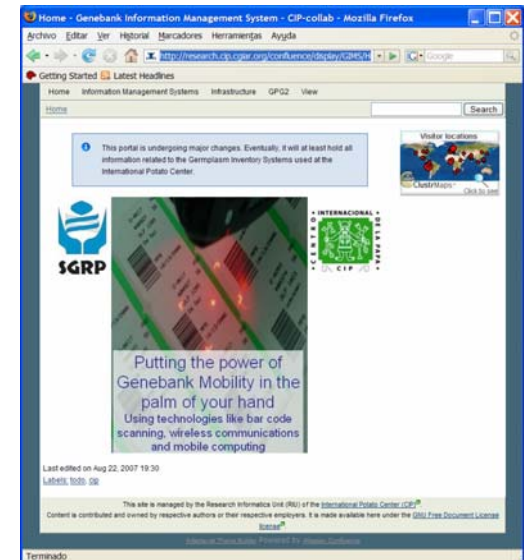
- **For CIPSER System**

<http://research.cip.cgiar.org/confluence/display/GIMS/Genebank+Inventory+System+for+Seed++CIPSER>

- **For CIP Mobile Solutions**

(barcode + thermal printing + mobile devices + wireless)

<http://research.cip.cgiar.org/confluence/display/GIMS/Home>



Thanks!!

Acknowledgements:

- CIP staff
- CGIAR Partners: IRRI Staff (Graham McLaren, Arllet Portugal, Sison Lilibeth and Prantilla Roniela) and CIAT Staff